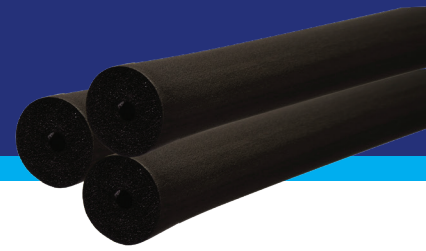
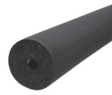


JONES STEPHENS RUBBER PIPE INSULATION



Seamless Rubber Pipe Insulation



3/8" WALL THICKNESS



PART NO.	Insulation Nominal ID	CTS (Nom. ID Plumbing)	CTS (OD HVAC/R)	IPS	FT/ BOX
I60025	1/4"	1/8"	1/4"	--	630'
I60038	3/8"	1/4"	3/8"	1/8"	612'
I60050	1/2"	3/8"	1/2"	1/4"	432'
I60058	5/8"	1/2"	5/8"	3/8"	378'
I60075	3/4"	5/8"	3/4"	--	342'
I60078	7/8"	3/4"	7/8"	1/2"	288'
I60118	1-1/8"	1"	1-1/8"	3/4"	216'
I60138	1-3/8"	1-1/4"	1-3/8"	1"	168'
I60158	1-5/8"	1-1/2"	1-5/8"	1-1/4"	150'
I60200	2"	--	--	1-1/2"	120'
I60218	2-1/8"	2"	2-1/8"	--	96'
I60250	2-3/8"	--	--	2"	84'
I60258	2-5/8"	2-1/2"	2-5/8"	--	72'
I60300	2-7/8"	--	--	2-1/2"	60'
I60318	3-1/8"	3"	3-1/8"	--	60'
I60350	3-1/2"	--	--	3"	48'

1/2" WALL THICKNESS

PART NO.	Insulation Nominal ID	CTS (Nom. ID Plumbing)	CTS (OD HVAC/R)	IPS	FT/ BOX
I61025	1/4"	1/8"	1/4"	--	510'
I61038	3/8"	1/4"	3/8"	1/8"	456'
I61050	1/2"	3/8"	1/2"	1/4"	360'
I61058	5/8"	1/2"	5/8"	3/8"	324'
I61075	3/4"	5/8"	3/4"	--	270'
I61078	7/8"	3/4"	7/8"	1/2"	228'
I61118	1-1/8"	1"	1-1/8"	3/4"	156'
I61138	1-3/8"	1-1/4"	1-3/8"	1"	120'
I61158	1-5/8"	1-1/2"	1-5/8"	1-1/4"	114'
I61200	2"	--	--	1-1/2"	114'
I61218	2-1/8"	2"	2-1/8"	--	102'
I61250	2-3/8"	--	--	2"	66'
I61258	2-5/8"	2-1/2"	2-5/8"	--	60'
I61300	2-7/8"	--	--	2-1/2"	48'
I61318	3-1/8"	3"	3-1/8"	--	48'
I61350	3-1/2"	--	--	3"	36'
I61358	3-5/8"	3-1/2"	3-5/8"	--	36'
I61418	4-1/8"	4"	4-1/8"	3-1/2"	24'
I61450	4-1/2"	--	--	4"	24'

3/4" WALL THICKNESS

PART NO.	Insulation Nominal ID	CTS (Nom. ID Plumbing)	CTS (OD HVAC/R)	IPS	FT/ BOX
I62025	1/4"	1/8"	1/4"	--	240'
I62038	3/8"	1/4"	3/8"	1/8"	228'
I62050	1/2"	3/8"	1/2"	1/4"	228'
I62058	5/8"	1/2"	5/8"	3/8"	180'
I62075	3/4"	5/8"	3/4"	--	144'
I62078	7/8"	3/4"	7/8"	1/2"	126'
I62118	1-1/8"	1"	1-1/8"	3/4"	90'
I62138	1-3/8"	1-1/4"	1-3/8"	1"	78'
I62158	1-5/8"	1-1/2"	1-5/8"	1-1/4"	72'
I62200	2"	--	--	1-1/2"	66'
I62218	2-1/8"	2"	2-1/8"	--	60'
I62250	2-3/8"	--	--	2"	48'
I62258	2-5/8"	2-1/2"	2-5/8"	--	42'
I62300	2-7/8"	--	--	2-1/2"	36'
I62318	3-1/8"	3"	3-1/8"	--	36'
I62350	3-1/2"	--	--	3"	30'
I62358	3-5/8"	3-1/2"	3-5/8"	--	30'
I62418	4-1/8"	4"	4-1/8"	3-1/2"	24'
I62450	4-1/2"	--	--	4"	24'

- Closed cell flexible elastomeric foam insulation tubes
- Seamless - Non-slit for slide-on applications
- Self-Sealing - (Pre-Slit / Pre-Glued / DoubleSeal closure system) for retrofit applications
- For use on HVAC/R, commercial, and industrial process piping and equipment
- For most indoor applications, no additional jacketing is required
- High resistance to moisture vapor intrusion; low thermal conductivity
- CARTON QUANTITIES ONLY

SPECIFICATIONS:

Temp Range: -297°F (-183°C) to +220°F (+104°C)

Flame/Smoke: ASTM E84 25/50-rated (to 2")

Water Vapor Permeability: <0.01 perm-in

Density: 3-6 lb/cubic ft

Mold growth: None

Ozone Resistance: Good

1" WALL THICKNESS

PART NO.	Insulation Nominal ID	CTS (Nom. ID Plumbing)	CTS (OD HVAC/R)	IPS	FT/ BOX
I63025	1/4"	1/8"	1/4"	--	120'
I63038	3/8"	1/4"	3/8"	1/8"	120'
I63050	1/2"	3/8"	1/2"	1/4"	114'
I63058	5/8"	1/2"	5/8"	3/8"	108'
I63075	3/4"	5/8"	3/4"	--	108'
I63078	7/8"	3/4"	7/8"	1/2"	90'
I63118	1-1/8"	1"	1-1/8"	3/4"	66'
I63138	1-3/8"	1-1/4"	1-3/8"	1"	60'
I63158	1-5/8"	1-1/2"	1-5/8"	1-1/4"	54'
I63200	2"	--	--	1-1/2"	42'
I63218	2-1/8"	2"	2-1/8"	--	42'
I63250	2-3/8"	--	--	2"	36'
I63258	2-5/8"	2-1/2"	2-5/8"	--	36'
I63300	2-7/8"	--	--	2-1/2"	36'
I63318	3-1/8"	3"	3-1/8"	--	30'
I63350	3-1/2"	--	--	3"	30'
I63358	3-5/8"	3-1/2"	3-5/8"	--	30'
I63418	4-1/8"	4"	4-1/8"	3-1/2"	18'

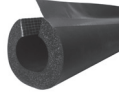
1-1/2" WALL THICKNESS

PART NO.	Insulation Nominal ID	CTS (Nom. ID Plumbing)	CTS (OD HVAC/R)	IPS	FT/ BOX
I64050	1/2"	3/8"	1/2"	1/4"	48'
I64058	5/8"	1/2"	5/8"	3/8"	48'
I64075	3/4"	5/8"	3/4"	--	48'
I64078	7/8"	3/4"	7/8"	1/2"	48'
I64118	1-1/8"	1"	1-1/8"	3/4"	36'
I64138	1-3/8"	1-1/4"	1-3/8"	1"	36'
I64158	1-5/8"	1-1/2"	1-5/8"	1-1/4"	36'

See reverse side for additional product listing!

RUBBER PIPE INSULATION

Double Stick Rubber Pipe Insulation



3/8" WALL THICKNESS

PART NO.	Insulation Nominal ID	CTS (Nom. ID Plumbing)	CTS (OD HVAC/R)	IPS	FT/ BOX
I80038	3/8"	1/4"	3/8"	1/8"	570'
I80058	5/8"	1/2"	5/8"	3/8"	348'
I80034	3/4"	5/8"	3/4"	--	318'
I80078	7/8"	3/4"	7/8"	1/2"	288'
I80118	1-1/8"	1"	1-1/8"	3/4"	216'
I80138	1-3/8"	1-1/4"	1-3/8"	1"	150'
I80150	2"	--	--	1-1/2"	120'
I80158	1-5/8"	1-1/2"	1-5/8"	1-1/4"	132'
I80218	2-1/8"	2"	2-1/8"	--	78'
I80200	2-3/8"	--	--	2"	78'

1/2" WALL THICKNESS

PART NO.	Insulation Nominal ID	CTS (Nom. ID Plumbing)	CTS (OD HVAC/R)	IPS	FT/ BOX
I81038	3/8"	1/4"	3/8"	1/8"	420'
I81050	1/2"	3/8"	1/2"	1/4"	312'
I81058	5/8"	1/2"	5/8"	3/8"	312'
I81034	3/4"	5/8"	3/4"	--	270'
I81078	7/8"	3/4"	7/8"	1/2"	216'
I81118	1-1/8"	1"	1-1/8"	3/4"	150'
I81138	1-3/8"	1-1/4"	1-3/8"	1"	120'
I81150	2"	--	--	1-1/2"	108'
I81158	1-5/8"	1-1/2"	1-5/8"	1-1/4"	108'
I81218	2-1/8"	2"	2-1/8"	--	102'
I81200	2-3/8"	--	--	2"	60'
I81258	2-5/8"	2-1/2"	2-5/8"	--	60'
I81250	2-7/8"	--	--	2-1/2"	48'
I81318	3-1/8"	3"	3-1/8"	--	48'
I81300	3-1/2"	--	--	3"	36'
I81358	3-5/8"	3-1/2"	3-5/8"	--	36'
I81418	4-1/8"	4"	4-1/8"	3-1/2"	24'
I81400	4-1/2"	--	--	4"	24'

3/4" WALL THICKNESS

PART NO.	Insulation Nominal ID	CTS (Nom. ID Plumbing)	CTS (OD HVAC/R)	IPS	FT/ BOX
I82038	3/8"	1/4"	3/8"	1/8"	228'
I82050	1/2"	3/8"	1/2"	1/4"	192'
I82058	5/8"	1/2"	5/8"	3/8"	180'
I82034	3/4"	5/8"	3/4"	--	120'
I82078	7/8"	3/4"	7/8"	1/2"	126'
I82118	1-1/8"	1"	1-1/8"	3/4"	90'
I82100	1-3/8"	1-1/4"	1-3/8"	1"	78'
I82158	1-5/8"	1-1/2"	1-5/8"	1-1/4"	72'
I82150	2"	--	--	1-1/2"	66'
I82218	2-1/8"	2"	2-1/8"	--	60'
I82200	2-3/8"	--	--	2"	48'
I82258	2-5/8"	2-1/2"	2-5/8"	--	42'
I82250	2-7/8"	--	--	2-1/2"	36'
I82318	3-1/8"	3"	3-1/8"	--	36'
I82358	3-5/8"	3-1/2"	3-5/8"	--	30'
I82418	4-1/8"	4"	4-1/8"	3-1/2"	24'
I82400	4-1/2"	--	--	4"	24'

1" WALL THICKNESS

PART NO.	Insulation Nominal ID	CTS (Nom. ID Plumbing)	CTS (OD HVAC/R)	IPS	FT/ BOX
I83058	5/8"	1/2"	5/8"	3/8"	108'
I83034	3/4"	5/8"	3/4"	--	78'
I83078	7/8"	3/4"	7/8"	1/2"	78'
I83118	1-1/8"	1"	1-1/8"	3/4"	66'
I83138	1-3/8"	1-1/4"	1-3/8"	1"	60'
I83158	1-5/8"	1-1/2"	1-5/8"	1-1/4"	42'
I83150	2"	--	--	1-1/2"	42'
I83218	2-1/8"	2"	2-1/8"	--	42'
I83200	2-3/8"	--	--	2"	36'
I83250	2-7/8"	--	--	2-1/2"	36'
I83358	3-5/8"	3-1/2"	3-5/8"	--	30'
I83418	4-1/8"	4"	4-1/8"	3-1/2"	18'

Rubber Insulation Roll

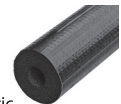
- Closed cell flexible elastomeric foam insulation rolls
- For use on HVAC/R and industrial process ductwork, vessels, equipment and large ID piping (>8" IPS)
- High resistance to moisture vapor intrusion; low thermal conductivity
- For most indoor applications, no additional jacketing is required
- Available as S2S (skin-two-side)
- CARTON QUANTITIES ONLY



PART NO.	DESCRIPTION	CTS (OD HVAC/R)	SQ FT/BOX
IR1470	1/2" thick x 4' x 70' roll	5/8"	280'
IR5415	2" thick x 4' x 15' roll	3/4"	60'

Titan™ Seamless UV Resistant Rubber Pipe Insulation

- Closed cell elastomeric foam NBR/PVC tube with flexible polymeric jacketing material
- Ideal for outdoor applications: UV resistant, tear resistant, weather resistant
- 1-Step Install: No field applied protective coating or additional jacketing required
- CARTON QUANTITIES ONLY



1/2" WALL THICKNESS

PART NO.	Insulation Nominal ID	CTS (Nom. ID Plumbing)	CTS (OD HVAC/R)	IPS	FT/ BOX
I91025	1/4"	--	1/4"	--	510'
I91038	3/8"	1/4"	3/8"	1/8"	456'
I91050	1/2"	3/8"	1/2"	1/4"	360'
I91058	5/8"	1/2"	5/8"	3/8"	324'
I91075	3/4"	5/8"	3/4"	--	270'
I91078	7/8"	3/4"	7/8"	1/2"	228'
I91118	1-1/8"	1"	1-1/8"	3/4"	156'
I91138	1-3/8"	1-1/4"	1-3/8"	1"	120'

3/4" WALL THICKNESS

PART NO.	Insulation Nominal ID	CTS (Nom. ID Plumbing)	CTS (OD HVAC/R)	IPS	FT/ BOX
I92050	1/2"	3/8"	1/2"	1/4"	228'
I92058	5/8"	1/2"	5/8"	3/8"	180'
I92075	3/4"	5/8"	3/4"	--	144'
I92078	7/8"	3/4"	7/8"	1/2"	126'
I92118	1-1/8"	1"	1-1/8"	3/4"	90'
I92138	1-3/8"	1-1/4"	1-3/8"	1"	78'
I92158	1-5/8"	1-1/2"	1-5/8"	1-1/4"	72'

Visit www.jonesstephens.com for product specification sheets.

Contact your local Jones Stephens sales representative to order today!

